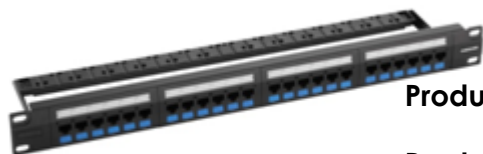


PATCH PANEL MULTILAN CAT.5E - RoHS



| | |
|---------------------|-------------|
| Product Type | Patch Panel |
|---------------------|-------------|

| | |
|-----------------------|----------|
| Product Family | Multilan |
|-----------------------|----------|

| | |
|-----------------|----------------|
| Standard | ROHS Compliant |
|-----------------|----------------|

Applications

| | |
|---------------------------------|--------|
| Installation Environment | Indoor |
|---------------------------------|--------|

| | |
|------------------------------|----------------|
| Operation Environment | Non Aggressive |
|------------------------------|----------------|

| | |
|----------------------|------------------|
| Compatibility | All FCS products |
|----------------------|------------------|

| | |
|-----------------|-----------|
| Warranty | 12 months |
|-----------------|-----------|

| | |
|--------------------------|--|
| Extended Guaranty | 15 or 25 years - in accordance to the Special Warranty Program FCS |
|--------------------------|--|

Advantage

- Exceeds the limits established in the Standards for CAT.5E/Class D,
- Guaranteed channel performance up to 4 connections on channels up to 100 meters;
- Support a IEEE 802.3, 1000 BASE T, EIA/TIA-854, ANSI-EIA/TIA-862, ATM, Video, System of the automation building and all protocols LAN previous;
- 19" width, as requirements of standard ANSI/TIA/EIA-310E;
- Allows the fixation of identification icons;
- Connector with IDC on angle of the 45°;
- Compatible with RJ-11;
- Allows the crimping T568A or T568B;
- Provided with rear protectors;
- Provided with 24 blue and red icons;
- Warranty of ZERO BIT ERROR on Fast e Gigabit Ethernet;
- Provided with rear guide that allows the fixation Individual the cables.

| | |
|-----------------------|--|
| Identification | Furukawa logotype and indication category in the front and back. |
|-----------------------|--|

| | |
|--------------|---|
| Trace | Lot of production printed on product's structure. |
|--------------|---|

Constructive characteristic

| | |
|-------------|------------|
| High | 44 mm (1U) |
|-------------|------------|

| | |
|--------------|---------------|
| Width | 482,6mm (19") |
|--------------|---------------|

| | |
|------------------------|-------|
| Metal thickness | 1,8mm |
|------------------------|-------|

| | |
|---------------------------|-------|
| Painting thickness | 80 µm |
|---------------------------|-------|

| | |
|----------------------|-------|
| Painting Type | Epoxy |
|----------------------|-------|

| | |
|---------------------------------------|---|
| Weight | 0,86 kg |
| Color | Black |
| Front connector type | Female RJ-45 fixed on PCB. |
| Cable type | U/UTP Cat. 5e |
| Positions Quantity | 24 positions |
| Material of electrical contact | RJ-45: Phosphor bronze with 50 µin (1,27 µm) of gold and 100 µin (2,54µm) of nickel 110 IDC: Phosphor bronze with 100 µin (2,54 µm) of nickel and tinned |
| Material of Product body | Structure: steel Front panel: high impact thermoplastic no fire propagation UL94V-0. |
| Conductor diameter | 26 up to 22 AWG |

Accessories Included

| | |
|--------------------------|------------------|
| Accessories Included | 24 positions |
| Rear Guide of the cables | 1 |
| Icons | 24 blue e 24 red |
| Screw | 4 x M5x12mm |
| Clamp Plastic | 24 |
| Rear Protective | 48 |

| | |
|------------------------------|-----------------|
| Assembly Standard | T568A and T568B |
| Storage Temperature | -40°C to +70°C |
| Operation Temperature | -10°C to +60°C |

Performance

| | |
|--|---|
| Retention force between jack and plug | At least 133N |
| Cycles quantity | ≥750 RJ45 and ≥200 RJ11 ≥200 for the IDC block |
| Insulation Resistance | 500 MΩ |
| Contact resistance | 20mΩ |
| DC resistance | 0,1Ω |
| Dielectric strength | 1000V (RMS, 60Hz, 1 min) |
| Contact force | 0,98N (100g) |

Package

| | |
|--------------------------------|---------------------|
| Package Type | Box |
| Minimum order quantity | 1 box |
| Amount for box gift | 1 |
| Amount for box (carton) | 15 pieces (24 port) |
| Dimension (WHD) | 510 x 70 x 60 mm |
| Individual package | 0,86 kg |
| Associated Solutions | Commercial Building |

Standards and Certifications

| | |
|----------------------|--|
| Standard | EIA/TIA 568 C.2 and Addendums |
| | ISO/IEC 11801 |
| | NBR 14565 |
| | TIA/EIA - 310 E - CABINETS, RACKS, PANELS, AND ASSOCIATED EQUIPAMENT |
| Certification | ISO9001/ISO14001 416253 |
| | UL Listed E173971 |
| | ETL Verified |